

AC Wiring

IMPORTANT!

Please read carefully

The BAT85 diode for the inductive probe is installed on the toolboard PCB.

Manta M8P Voron Mount

<https://www.thingiverse.com/thing:5514059>

Z-Probe PCB STLs

https://github.com/VoronDesign/Voron-Hardware/tree/master/Microswitch_Z_Endstop/STLs

Toolhead PCB Covers:

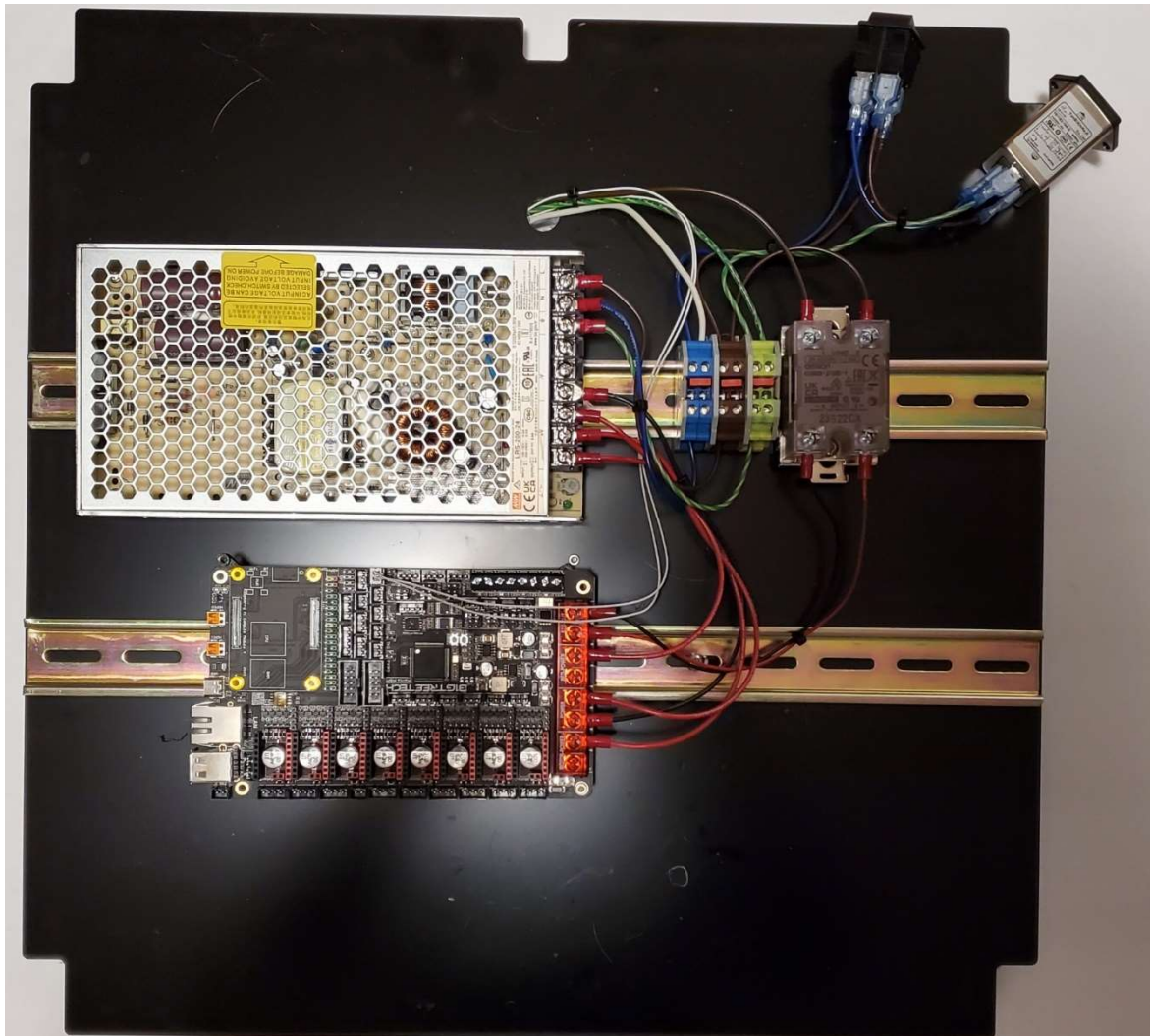
[https://github.com/VoronDesign/Voron-Hardware/tree/master/Afterburner Toolhead PCB/STLs/Clockwork/Covers](https://github.com/VoronDesign/Voron-Hardware/tree/master/Afterburner_Toolhead_PCB/STLs/Clockwork/Covers)

Questions?

support@spool3d.ca

Notes of importance for this kit:

- There is no Raspberry Pi
- There is no Raspberry Pi power supply
- The Manta M8P board accepts the CB1 (Raspberry Pi replacement)
- Terminal Blocks distribute AC power.
- There are WAGO blocks included for quick disconnect of the heat bed connections and replacement of the thermal fuse if required.



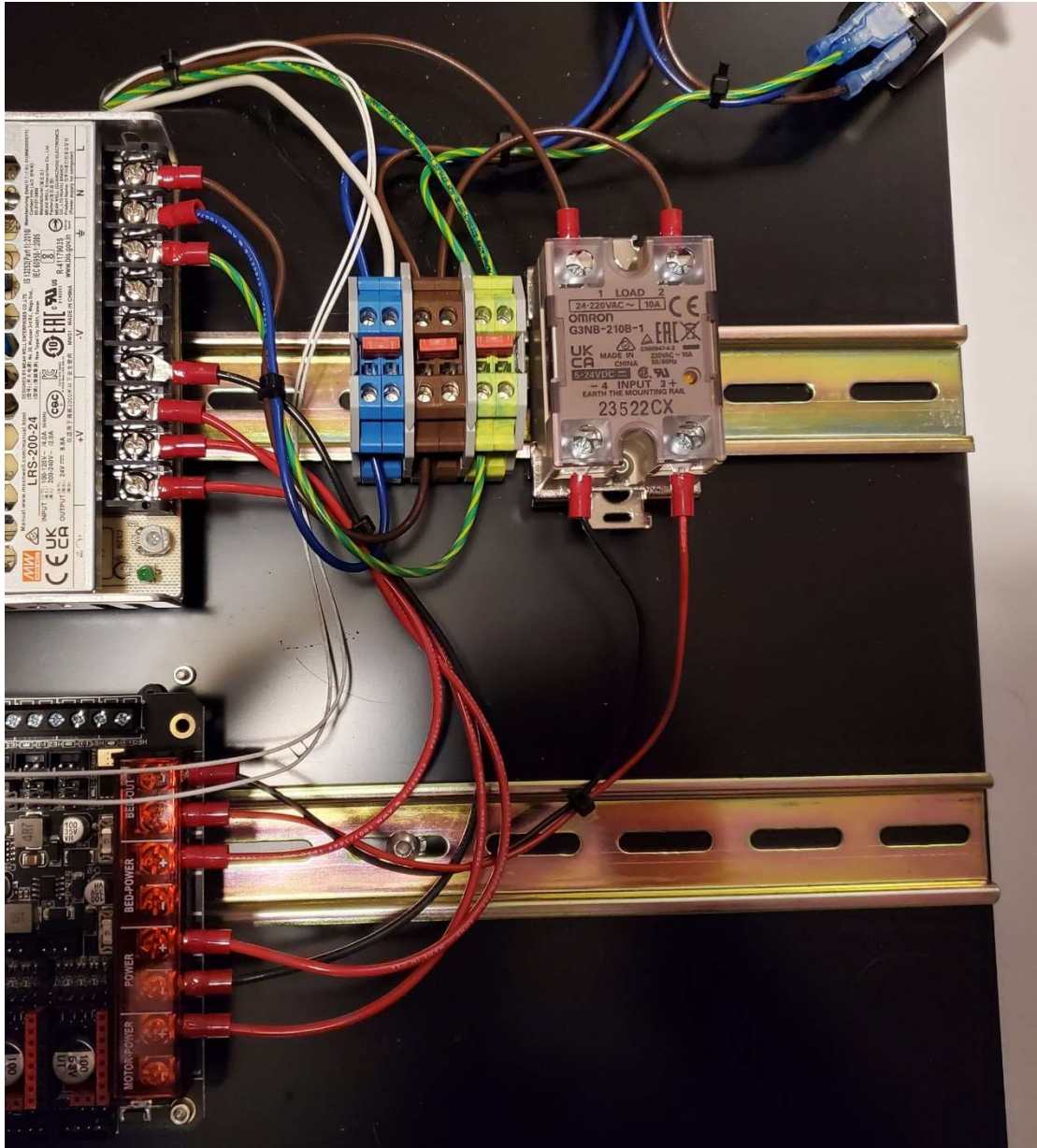
Closeup of AC inlet and AC switch

- Don't forget the fuse!



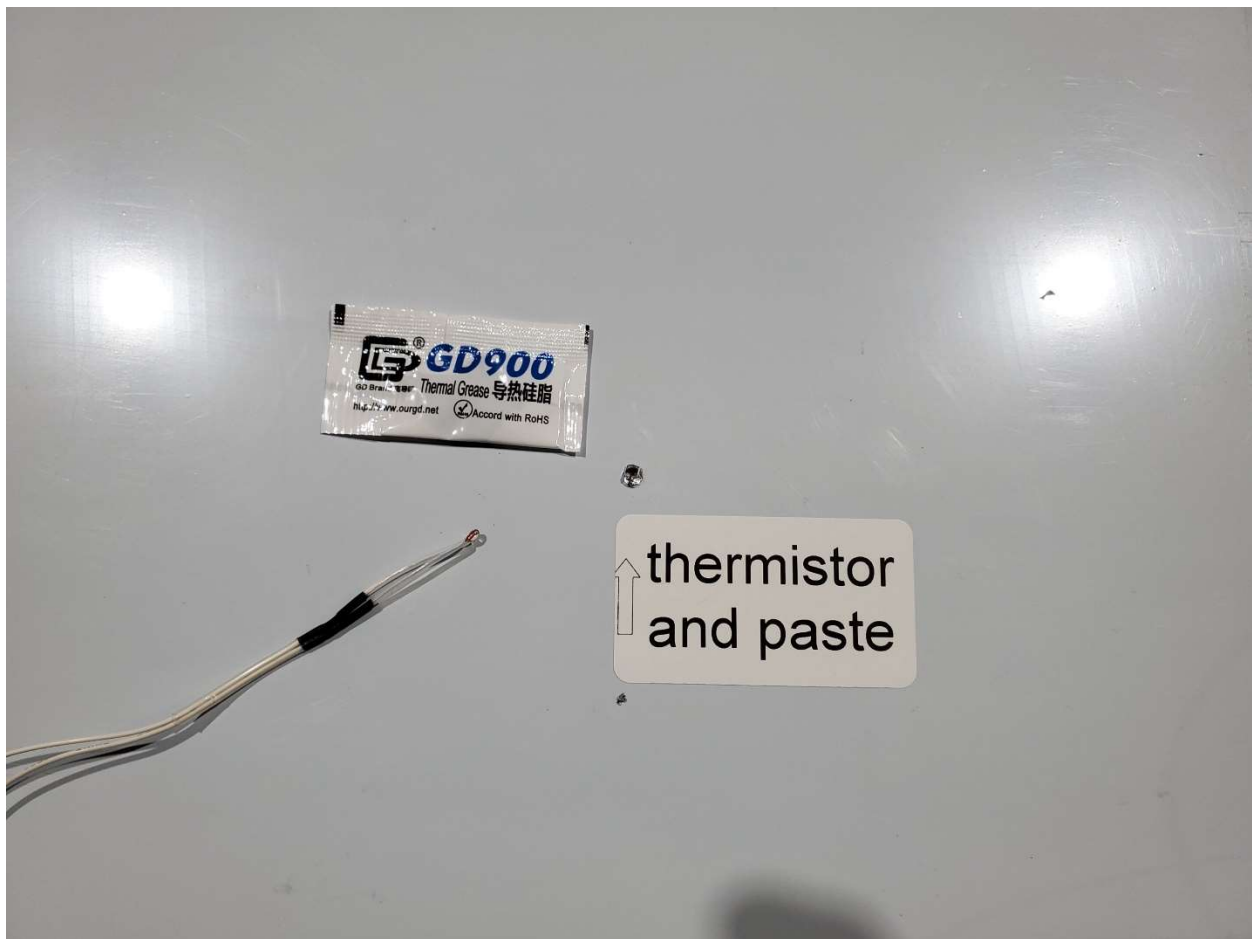
Closeup of electronics connections.

- There is one ground wire from the Mean Well power supply to the Manta M8P board as all GND connections on the board are connected.
- The ground (green/yellow) terminal block is connected internally by the block itself to the DIN rail. The DIN rail is grounded in this way.



Bed Thermistor and heater

- Please remove protective covering from the bed.
- Please use included thermal paste for hole in the bottom of the plate and insert thermistor bead prior to installing the heater.
- Heater has high temperature pressure sensitive adhesive. Please remove backing and apply to bottom of the bed over the thermistor. Press firmly over its entirety and allow some time prior to heating for the first time.



Connections for the bed heater

- 6 WAGO blocks are included. 2 for the thermal fuse/AC connection, 2 for the thermistor, 2 extras.

